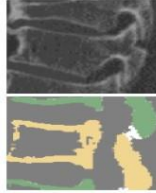
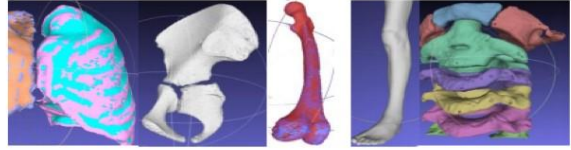




Manual/semi automated segmentation

Trials: combinations of filtering (median, DoG, thresholding, mask editing)

- Volmo: custom programs
 - SOTON: Simpleware
 - Univ Lyon-Ifsttar: Slicer, Meshlab
- Results: time consuming...
- OK for objects that can be easily separated (some bones...)
 - A lot of manual editing for some other → problematic for spine
 - 4 full bodies processed (SOTON, VOLMO) → used for reference models (template) after cleaning



Volmo



SOTON

PIPER Workshop | 08/09/2015 | WP2: Segmentation | Presenter: Philippe Beillas

For more details visit https://www.piper-project.eu/media/workshop/04_piper_wp2_predictors_posture_shape.pdf